

# The Hammered Wind Dances

by Jeffrey Harrington

Flute

## Flute Sonata II

*pp*

*poco a poco cresc.* *mp* *mf*

*f* *ff*

*ff*

*ff*

*ff*

*ff*

*ff*

*poco f*



Flute

34



37



40



*molto rit.*

43



46



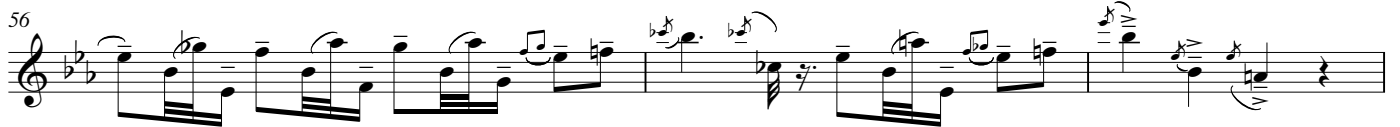
49



53



56



59



61



Flute

64 *mf* *poco f*

69

73

76

78 *poco accel.*

82  $\text{♩} = 75$

*poco accel.*  
85 *f*

88  $\text{♩} = 100$

91 *ff*

93



## Flute

95

97 *molto pesante*

100

103

106

109

113

116 *fff*

118

120

The image shows a page of a musical score for a flute. The page is numbered '4' in the top left corner. The title 'Flute' is centered at the top. The score consists of ten staves of music, each starting with a measure number: 95, 97, 100, 103, 106, 109, 113, 116, 118, and 120. The music is written in a treble clef with a key signature of three sharps (F#, C#, G#). The notation includes various rhythmic values, slurs, and dynamic markings. The marking 'molto pesante' appears above the staff starting at measure 97, and 'sempre ff' appears below the staff at measure 97. The marking 'fff' appears below the staff at measure 116. The music features complex rhythmic patterns, including sixteenth and thirty-second notes, and is characterized by frequent slurs and ties. The page ends with a small handwritten mark in the bottom right corner.

Flute

122 *tr* *tr* *tr* *tr* **6** *fff*

134 *ff* *poco rit.* *meno f*

138 *sfz* *f* **80**

142 *poco rit.* **75**

146 **3**

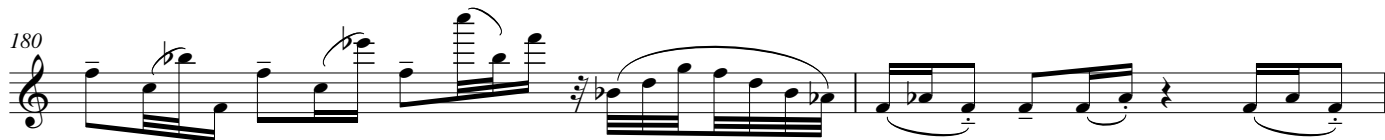
150 **3**

153 **3**

156 *poco accel.* **6** *ff* *ff*

159 **100**

162



Flute

192 *f*

195

198

200

204

207 *ff*

210

212

214

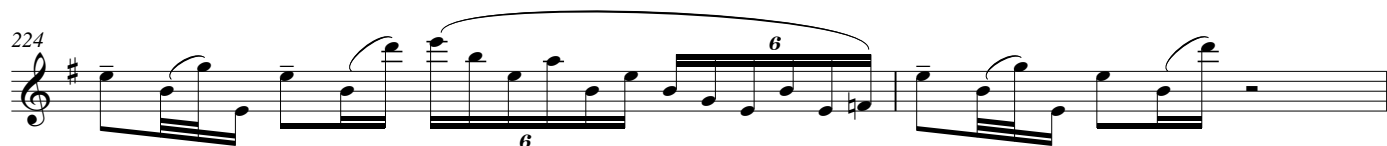
217

## Flute

221



224



226



230



233



236



239



243



246 **accel.**  $\text{♩} = 120$



249  $\text{♩} = 80$



Flute

254

*p*

260

266

*p* *f*

272

*p* *p* *mf*

278

284

*pp*

289

*p* *mf*

294

*f*

300

*ff*

305

*poco f*



310

*meno f*

317

*mf* *poco a poco cresc.*

323

329

335

341

*f* *mf*

347

*mf*

352

*f* *ff* *fff*

355

359

*fff*

Flute

362

366

370

*fff*

372

374

376

*tr* *tr* *tr* *tr*

*fff*

383

*ff*

*rit.*

386

80